



MINECRAFT
EDUCATION EDITION

NGĀ MOTU GAME CARDS

Developed by **CORE** EDUCATION
Tātai Aho Rau

WHAT'S IN THE DECK?

Quick Start Guide

Glossary

Map

Story

In your world

Recreate a favourite place within Minecraft: Education Edition and share it with your class.

Nau Mai, Haere Mai

Learn about pōwhiri and create a welcome of your own.

Who's in my Waka?

Learn about the *HMS Endeavour* arriving in Aotearoa and the stories of your classmates. Create a virtual waka for your class.

Whānau

Learn about your family tree and create a visual representation of it.

Explore Ngā Motu

Discover the rich ecosystem.

What is this Whenua?

Learn about the land your school is in and recreate a shared tradition.

Te Whare

Learn about whare through virtual and physical visits.

What we Build

Build a humble whare for the long-term visitors to Ngā Motu.

Build bigger

Work collaboratively to build a large meeting place.

Manage our Rawa

Design a new land.

A New Land Together

Work collaboratively to build a new land.

Power Up Card A

Power Up Card B





Quick Start Guide

Realm A – Knowing

Realm E – Exploring

Realm I – Creating

Power Up Card A

QUICK START GUIDE

What is this?

A learning card deck that features in-game and out-of-game cultural learning **wero** (challenges) connected to the **Ngā Motu** world. Complete the deck to have fun while learning.

What is Ngā Motu?

Ngā Motu (The Islands) is a Minecraft: Education Edition world dedicated to learning about the indigenous language, culture and people of **Aotearoa**.

You'll need the Ngā Motu world to make the most of this card deck. You can download it for free from the Minecraft: Education Edition website: aka.ms/NGAMOTU-WORLD.

What are the realms?

Each of the learning cards fall into one of three learning realms named after the **Te Reo Māori** vowels:

A - Knowing (Purple)

E - Exploring (Red)

I - Creating (Yellow)

Which cards should I use first?

The game cards can be used in the order they're summarised in on the What's in the Deck card or used as stand-alone activities.

What is the glossary card for?

You'll find **Te Reo Māori kupu** (Māori language words) highlighted throughout this learning resource. Look them up in the glossary to find out what they mean.

What are the Power Up cards?

The green Power Up cards connect to certain activities and help you to take your learning even further.



This Minecraft: Education Edition of Ngā Motu was commissioned by Microsoft New Zealand, developed by Core Education and designed and built by Piki Studios.

GLOSSARY

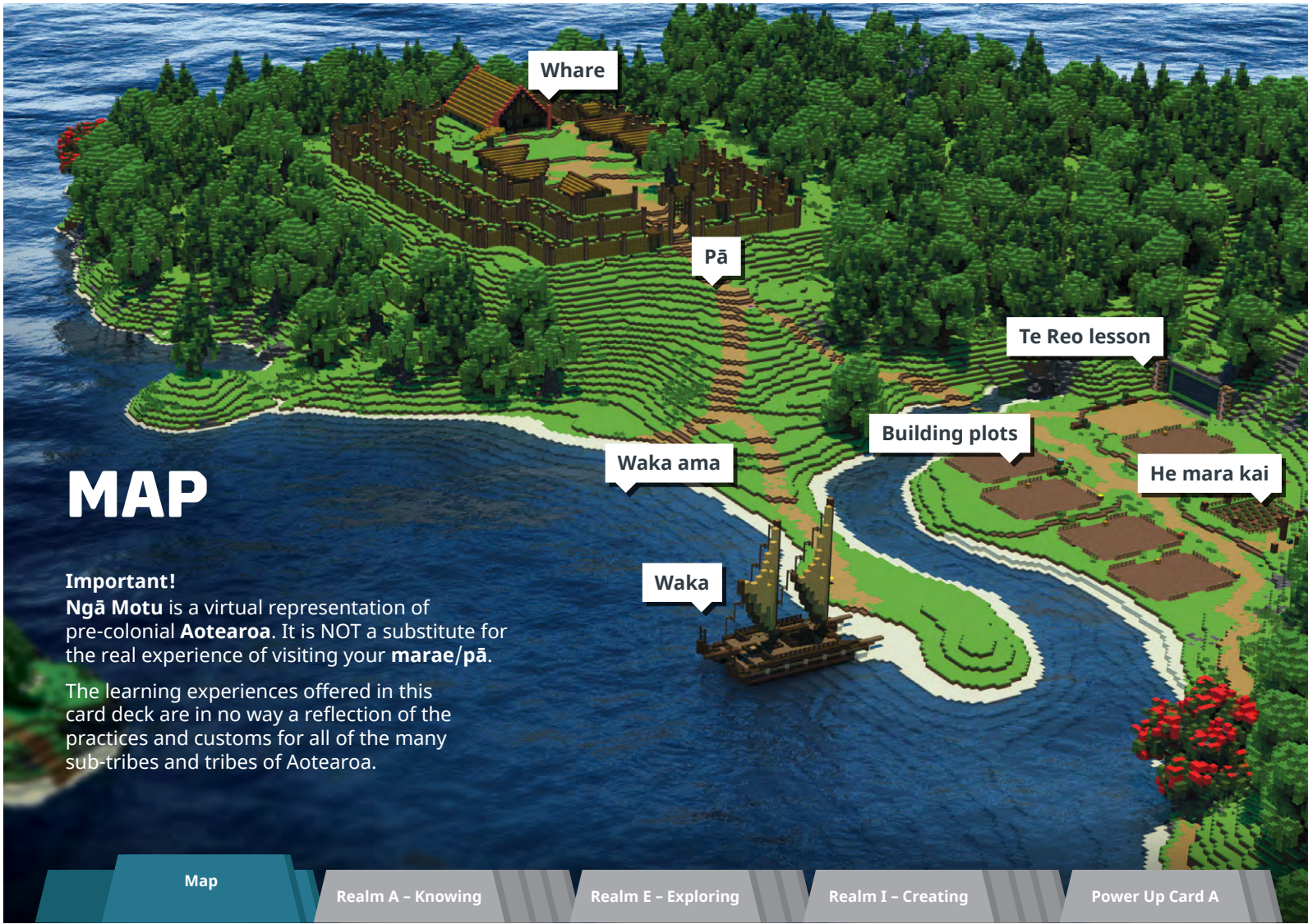
You'll find **Te Reo Māori kupu** (Māori language) highlighted throughout the game cards.

Use this card to find out what they mean.

Māori	English
ākau	shore
Aotearoa	New Zealand
ātea	open area in front of the wharenuī
atua	god/deity
awa	river
ana	cave
hapū	sub-tribe
iwi	tribe
kaitiaki	guardians
kīrehe	animal
kupu	words
ngahere	forest
manuhiri	visitor/s
Māori	indigenous people of Aotearoa

Māori	English
maunga	mountain
ngāi kīrehe	fauna
Ngā Manu a Tāne	birds (Children of Tāne mahuta)
Ngā Motu	The Islands
pā	fortified village
Pākehā	New Zealanders of non-Māori descent
pēpehā	tribal introduction
pōwhiri	welcome ceremony
puke	hill
repo	swamp
rohe	area
roto	lake
tāhuhua	sand dune
taonga	treasure

Māori	English
tātahi	beach
tikanga	protocols
tipu	flora
Te Aitanga a Punga	insects, reptiles
Te Reo Māori	The Māori Language
tūpuna of Te Moana Nui a Kiwa	ancestors of the Pacific
waka	canoe
wero	challenge
whaitua	region
whakapapa	genealogy
wharekai	kitchen
wharenuī	big house
whare	house
whenua	land



MAP

Important!
Ngā Motu is a virtual representation of pre-colonial **Aotearoa**. It is NOT a substitute for the real experience of visiting your **marae/pā**.

The learning experiences offered in this card deck are in no way a reflection of the practices and customs for all of the many sub-tribes and tribes of Aotearoa.

Map

Realm A - Knowing

Realm E - Exploring

Realm I - Creating

Power Up Card A

STORY

Welcome to **Ngā Motu!**

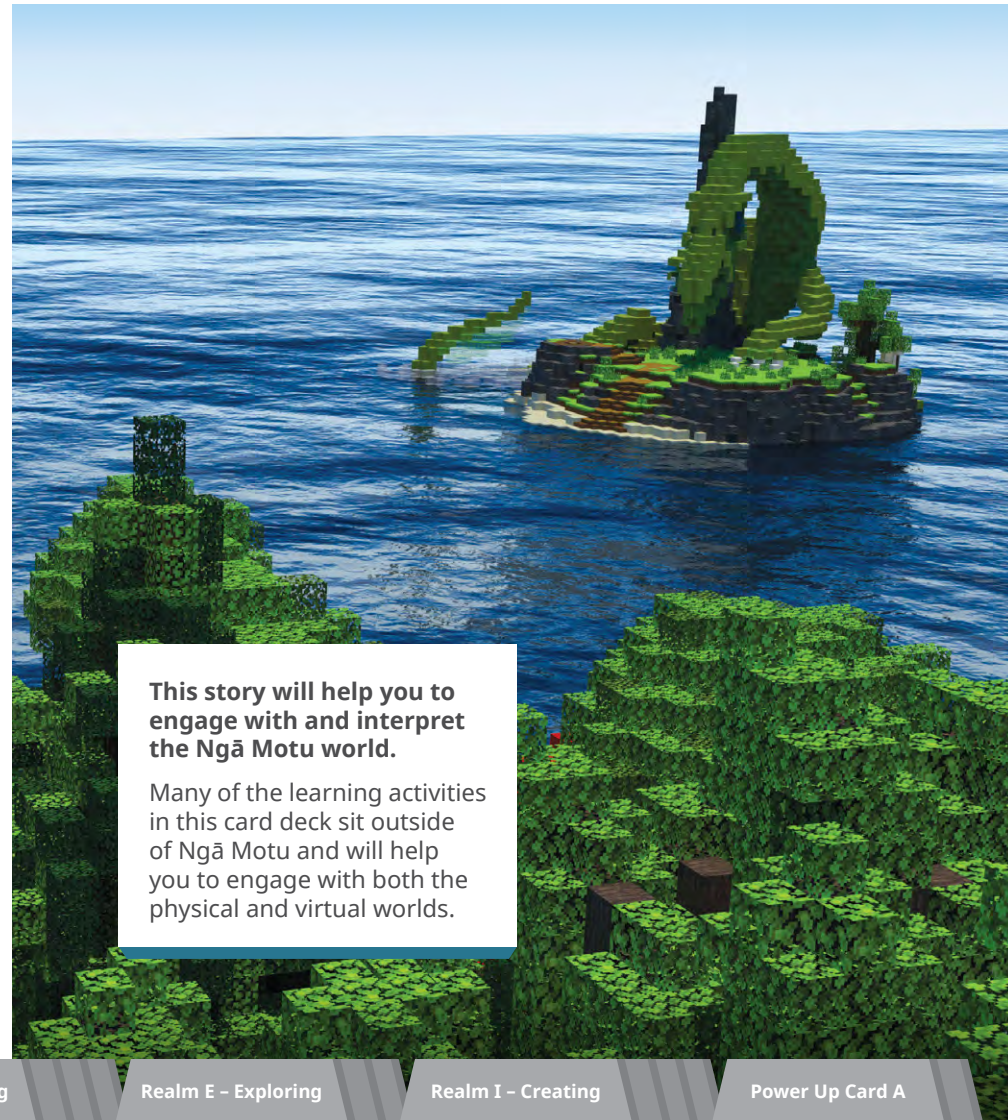
A tribe of people have arrived on a double-hull **waka** on Ngā Motu.

The people are hoping that they will be able to stay on Ngā Motu until they fix their waka and set sail again.

The islands are already inhabited by a tribe. How will the visitors engage with the inhabitants of these islands and make everlasting and healthy relationships with them?

There is much to learn about their customs and ways of life, and with the new visitors, more room is needed and new spaces and resources need to be created.

How will you do your part to help keep people warm and sheltered, and provide enough food?



This story will help you to engage with and interpret the Ngā Motu world.

Many of the learning activities in this card deck sit outside of Ngā Motu and will help you to engage with both the physical and virtual worlds.

Story

Realm A – Knowing

Realm E – Exploring

Realm I – Creating

Power Up Card A